

HOME & DESIGN[®]

Luxury Homes | Interior Design | Home Furnishings



0 74470 56061 4

©2011 Home & Design, LLC

| Southwest Florida |

Starting as a spec home in Fiddler's Creek, the goal for the unfurnished residence built by Stock Construction was to enhance the interior with rich character and depth, creating an interior with a new take on traditional decor.

"I am proud that we were able to successfully marry the existing finishes in the home to the client's vision for an outcome that illustrates the allure of timeless elegance," says interior designer Chrissy Howard of Jinx McDonald Interior Designs, Inc. "It is a piece of livable luxury." With the much needed help of Associate Barbara Dale of Jinx McDonald Interior Designs, Howard was able to bring this treasure to life.

Chic and comfortably dramatic, each room serves as a complement to the owners. "The most interesting part was our profound connection to the clients. They trusted and allowed us to create, on a very high level, an interior custom tailored to them," says Howard.

While the home was purchased unfurnished, the flooring, cabinetry, and countertops were all produced by Stock Development. "The Victoria Grande was a custom home designed by Alberto Abad for Stock Signature Homes, and reflects our commitment to great design that provides a pallet for our clients to customize," says Claudine Leger-Wetzel, Vice President of Sales and Marketing for Stock Development. The model comes complete with pool cabana and outdoor kitchen.

From top to bottom, the exterior of the home is impressive with concrete roof tiles and brick paver drive and walkways. Decorative iron doors and exterior designer lights are complemented by tall palm trees and well-kept planters creating a beautiful green space at the front of the home.





LIVABLE *luxury*

TRANSFORMING A SPEC HOME INTO A CUSTOM RETREAT





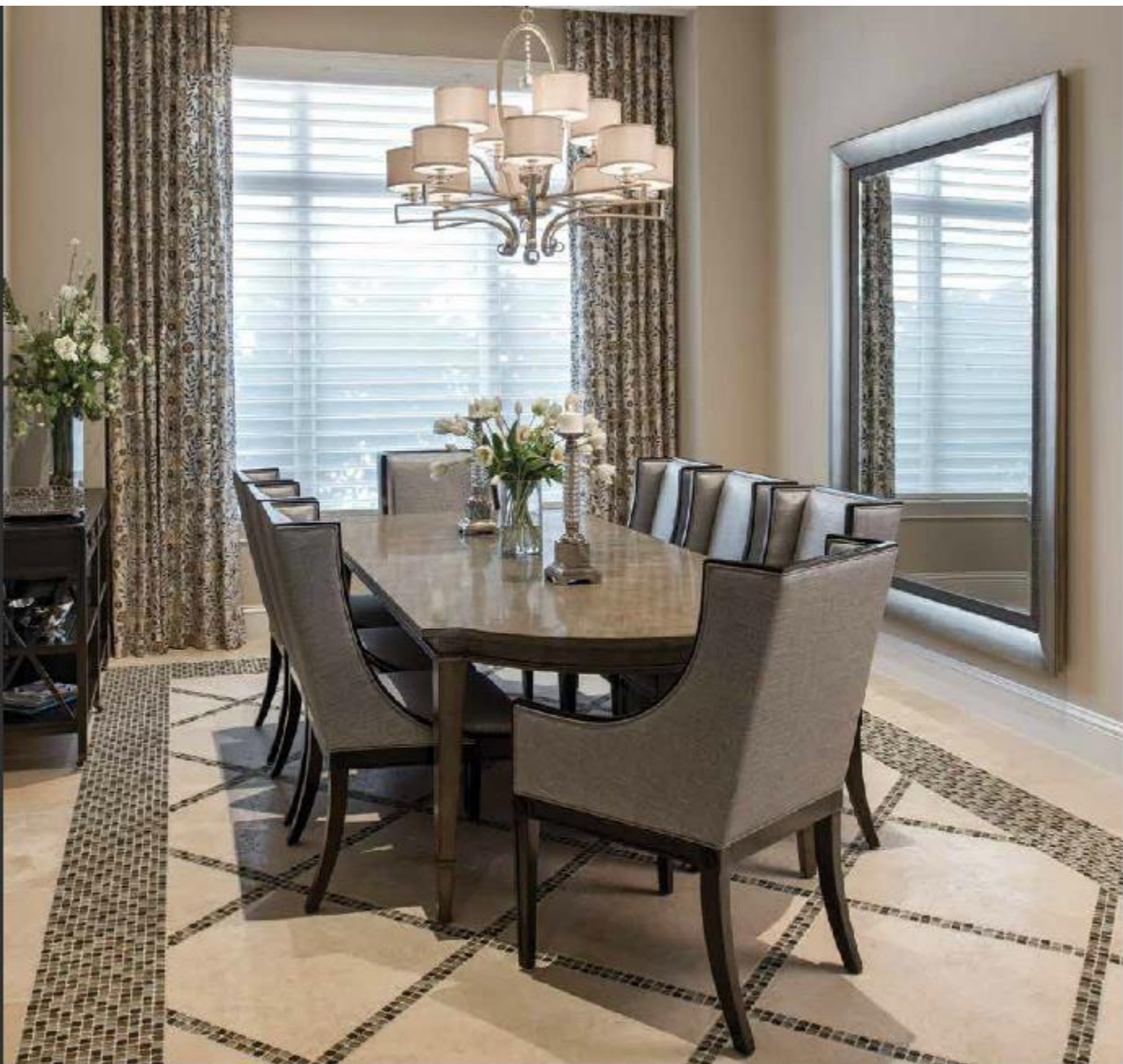
Opposite: The home's 'new traditional' design style comes to life in the great room. Soaring ceilings are finished with vibrant cobalt Venetian plaster. Khaki and mushroom gray act as a foundation for the blue tones. The dramatic ceiling height is only rivaled by the impressive forty-inch chandelier, a focal piece finished in a champagne tone. Sunlight flows through a large picture window framed by silk draperies in stylized floral. Framed, floor-to-ceiling mirrors flank the inviting fireplace. Two mocha-finished lounge chairs in navy blue Greek key print and a beautiful skirted sofa boasting a taupe herringbone fabric complete the room.

Above: In the breakfast nook, upholstered dining chairs sporting unique designs come together to surround a stainless steel topped table. The attractive area is brought to life through color, detailing from the builder and architect, and the transformation brought by Jinx McDonald Interior Design. The gourmet kitchen features wood cabinets, large neutral countertops, and GE Monogram appliances including natural gas cooktops.



Continuing into the family room, peacock green sofas flank the large driftwood gray cocktail table. A set of leather recliners rules one side of the gathering spot while two swivel loungers round out the seating group. A large custom area rug with a blue, green, gold, and gray palette dominates this space.





Above: The custom dining table in a mushroom tone anchors the elegant dining room. Distinctive wing back chairs with dark espresso wood trim are covered in slate toned linen. Silk embroidered drapery adds a softness which contrasts the neutral travertine floor with brushed glass tile inlays. In the coffered ceiling, the sparkle of silver mica wallpaper draws the eye up while a stylish light fixture and large mirror round out the aesthetic.

Opposite: The study, with a more masculine flair, provides plenty of storage and workspace through two executive desks. Each of these furniture pieces shows off a finish of charcoal with tan leather writing surfaces. Regal ikat drapery in a dark blue, gold, and gray pattern surround French doors leading to the pool, spa, and outdoor kitchen. Continuing the strong feel of this impressive office, grasscloth in light gray with a washed navy accent adds texture to the walls.





Above: The scroll wallpaper dazzles in a soft champagne tone and blends with the beautiful Carrara marble used on the bathroom vanity countertops, tub surround, and floor. Eye-pleasing painted wood cabinets provided storage and the generous floor space in the bathroom allows for a separate shower.

Opposite: Charm and romanticism rule supreme in the tasteful master suite. Described by Howard as a sanctuary, the palette presented here is mineral blue and greige. The accompanying button-tufted upholstered bed is flanked by custom-painted nightstands overlaid in just the right shade of blue. Pieces such as the mirrored double dresser, the polished chrome and glass lamps, and the lightly antique mirrored chandelier invite glamour and style into this space. The addition of nearby chairs and table contribute to the relaxing mood. Howard notes that the fabric used for the drapery is an embroidered floral in pewter, with ebony and a smoky blue.









Above: The home's heated pool and spa are accented with flowers and plant life. The large and open layout is complete with an assortment of coordinated furniture pieces, from poolside lounge chairs to side tables. The pool cage keeps the pool clean and the home more private while outdoor lighting allows the lanai space to be used both day and night.

Opposite: The lanai offers up a wonderful alternative to cooking indoors. Complete with an outdoor fireplace and fully appointed kitchen, this sensible and intimate layout creates the perfect entertaining area. Capitalizing on the previously established palette inside the home, the chairs, and their accompanying tables, marry together bright aqua with the weathered gray finish found in the case goods.

Written by Chris Kelley
Photography by Amber Frederiksen Photography

Jinx McDonald Interior Designs, Inc.
1959 Trade Center Way
Naples, FL 34109
239.598.4800
www.jinxmcdonald.com

Stock Signature Homes
2659 Professional Circle, Suite 101
Naples, FL 34119
239.592.7344
www.stockdevelopment.com